



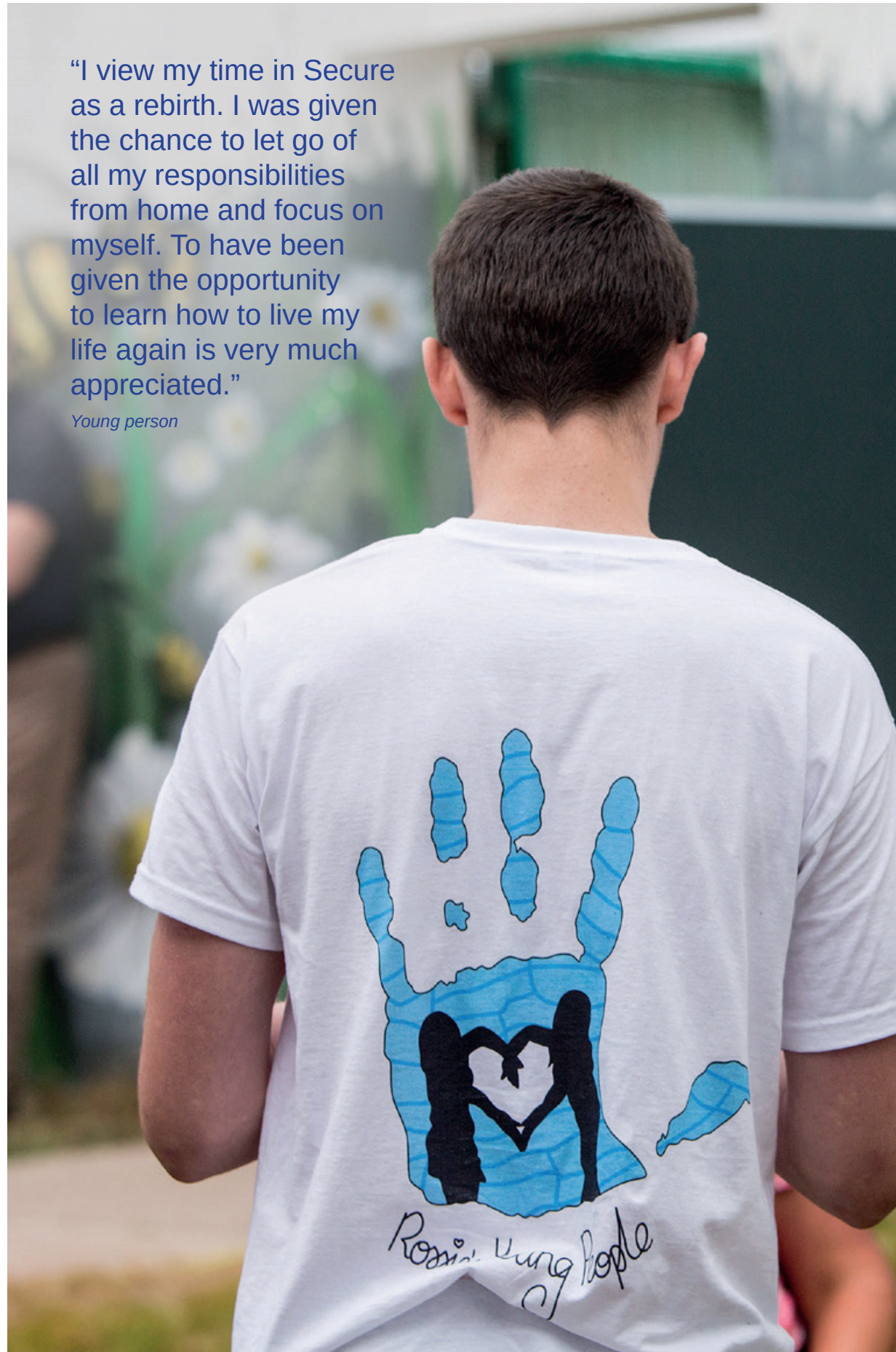
Rossie



A supportive, stimulating and homely environment in which young people thrive and can achieve their full potential.

“I view my time in Secure as a rebirth. I was given the chance to let go of all my responsibilities from home and focus on myself. To have been given the opportunity to learn how to live my life again is very much appreciated.”

Young person



Who we are

Rossie is a registered Scottish charity, dating back to 1857, located on the east coast of Scotland, and one of the UK's longest established providers of children's services. We are situated within 150 acres of beautiful Angus countryside, which affords both tranquillity and access to even wider spaces for adventure and activities.

We work with young people, boys and girls, aged 10-18 years old, who may have been exposed to multiple adverse childhood experiences resulting in many complex needs and vulnerabilities. We are a trauma-informed, child-centred organisation and we aim to protect and improve the wellbeing of our young people, maximising their potential and resilience and easing their transition back into their communities.

Our Board of Governors work with our CEO and Senior Leadership and Management Team to make Rossie a well-organised, cost-effective and sustainable organisation. Everyone at Rossie is supported by our Board of Governors who visit regularly and talk with staff and young people.

We extend an open invitation to you – COME AND VISIT US – and experience the Rossie welcome and enthusiasm of staff. See how our work at Rossie helps our young people reach their full potential and have hope for positive futures.



“All members of staff very friendly and welcoming, but still very professional.”

Social Worker



How we help

We help our young people in many ways to reach their full potential. We provide comfortable accommodation, nurturing care, inclusive education, bespoke health and psychological services and confident throughcare – all of which help our young people prepare for life once they move on from Rossie.

We are committed to helping our young people in our care build strategies to cope with their past, while they prepare for their future. We deliver all our services in a safe and nurturing environment where our young people can grow, develop and thrive, at their own pace.

Our services work holistically and collaboratively to deliver an individualised care package to every young person.

“The facility is clearly run by people with a real passion for care, support and education.”

Social Worker

Our Values

Respect

We expect all staff to be kind, listen, encourage, say ‘thank you’ and ‘sorry’, to be helpful in times of difficulty, and to celebrate with each other in times of success and achievement. We also value diversity and use our first-hand experience to make a difference both internally and across the wider community.

Integrity

We are open and honest in all our dealings, maintaining the highest level of truthfulness at all times. We are a reliable and trustworthy partner and service provider.

Delivery

We deliver on our legal, regulatory and contractual obligations through innovative responsive services. We maintain a critical focus on all our stakeholders, both internal and external to ensure we consistently deliver high quality services. We measure and evidence the impact of our interventions. We continue to strive for quality in all services, and across all teams and departments.

Accountability

We hold ourselves and others to account – we act responsibly and challenge appropriately. We are a responsive agile organisation, with a positive approach so we can “make it happen”.

Collaboration

We believe we achieve more and better by working together, combining our skills and knowledge. We take collective ownership of all challenges, successes and achievements.

University Partnerships

Our relationships with Universities are local, national and international. This ensures we keep our knowledge and practice current and future oriented. This enables us to have a skilled and professional workforce, delivering high quality services to our young people.



A Learning Organisation

Rossie is a learning organisation and committed to on-going improvement. We do this in many ways, and particularly through developing partnership with Universities and Colleges.

Research

At Rossie, we undertake qualitative and quantitative research to evaluate and drive new practice initiatives. Most recently our Specialist Intervention Service has conducted research into Adverse Childhood Experiences and completed a report on their findings.



Team Around the Child

The Team Around the Child (TAtC) is a multidisciplinary group of practitioners working with a particular young person while they live in Rossie. We believe that relationships have a real value in both growth and development. The TAtC meetings take place every six weeks and establish relationships from the time when a young person first arrives until they are ready to move on from Rossie.

The TAtC model recognises that the young person is an expert in their own experiences, needs and wishes. We respect our young people's views and they are central to this meeting. We have taken this approach one step further and empowered our young people to chair their own TAtC meeting.

“I am happy with my life now and the support I was provided by Rossie and other services.”

Young Person



Getting it Right for Every Child (GIRFEC)

In line with the Scottish Government, and the United Nations Convention on the Rights of the Child (UNCRC), our GIRFEC approach means that all of our young people can feel safe, valued and respected while living at Rossie. Using this approach helps us help our young people recognise and appreciate their full potential now, and when they are ready to move on.



Care at Rossie

Secure Care

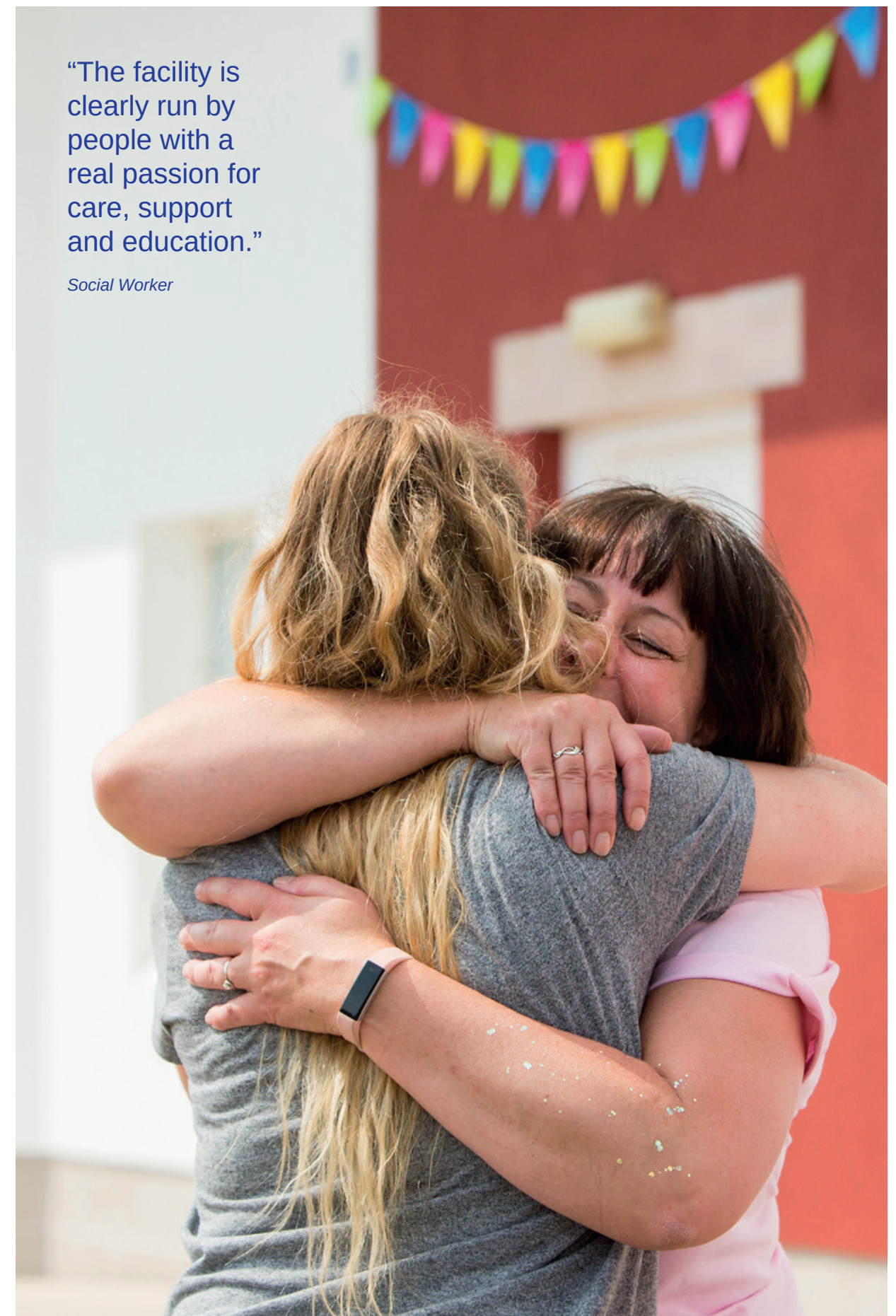
We have three secure homes named Beauly, Carron and Deveron, which accommodate up to six young people per house. Our secure care facility is a place of safety for young people who find themselves in difficult or distressing circumstances. Rossie mostly looks after young people who have been placed with us through the Children's Hearings or Family Court. However we also care for young people placed with us through Criminal Courts processes. The secure houses provide high levels of structure and assistance to all young people.

Residential Care

Our Residential Accommodation helps and cares for young people who are unable to live at home, or who no longer need secure care. Rossie has three residential houses and these are named Annan, Esk, and Forth House – after Scottish rivers. Annan and Esk provide 'close support' which means young people benefit from higher levels of support from care staff. Forth House is a traditional family style house which further prepares the young person for living in their community.

“There was a real sense of working in partnership”

Social Worker



“The facility is clearly run by people with a real passion for care, support and education.”

Social Worker

Education and Employability Skills

We provide our young people with a highly commended education provision through which they increase confidence, self-esteem and independence in learning. We have high expectations of, and aspirations for our young people and we encourage them to be the best they can be in order to reach their full potential. As a Scottish Qualifications Authority (SQA) approved school, we deliver the Curriculum for Excellence, National Qualifications as well as GCSE provision.

We have two schools, one secure and one residential. Our education team consists of our Head of Education, Training and Development, and 14 Education staff. Upon arrival, young people are introduced to the school via our nationally acclaimed and highly commended Induction Programme (HMIe, 2018). This gives our young people the opportunity to relax into their new surroundings, and to develop relationships with their new teachers and peers before joining their class.

Health and Psychology

Our Specialist Intervention Services (SIS) team provide all aspects of health and psychological services to our young people. Our multi-disciplinary SIS team works collaboratively with care and education staff to improve the physical, emotional and behavioural wellbeing of our young people.

Health Services

Our health team provides every young person with appropriate care and treatment that will benefit them. An Admissions Health Assessment is carried out to gather and establish as much information as possible prior to a young person's arrival. Once they are with us, we register them with the local GP, dentists and optometrist (as required). Young people also have access to our daily nurse clinic at Rossie.

Interventions

Our Chartered Psychologist has developed a bespoke Interventions Pathway which is used to assess, intervene and work with our young people for positive outcomes. It is an individualised journey for each young person to help them recover, restore and build strategies to cope with adverse events they may have experienced in their life.

As part of the pathway, we provide 1:1 intervention sessions as well as group work packages which target specific areas while working to the Curriculum for Excellence.

Child Protection

Rossie has an open and transparent policy with regard to the protection of children and vulnerable adults.

We know that young people can put themselves at risk, or that they can be at risk from people they know.

We have a well understood policy on what action will be taken to keep children and young people safe. Whenever there are concerns which may, (or may not) be a child protection matter, the Child Protection Policy and Procedure will be followed, and if necessary, the Child Protection/Vulnerable Adult Protocol will be invoked. This involves linking with local Child Protection Services and always liaising with placing authorities.

Our Child Protection Policy, Procedure and Good Practice Guidance are reviewed annually. Angus Child Protection Managers are involved in the review and the Child Protection Committee ratifies any agreed changes.

Angus Child Protection Team works sensitively with every query and they help Rossie to get it right for children and young people. Each person involved knows that careful listening to what children say matters, and that it's everyone's job to make sure that every child and young person is helped not just to feel safe, but to be safe.

“My SIS worker helps me think before I act”

Young person

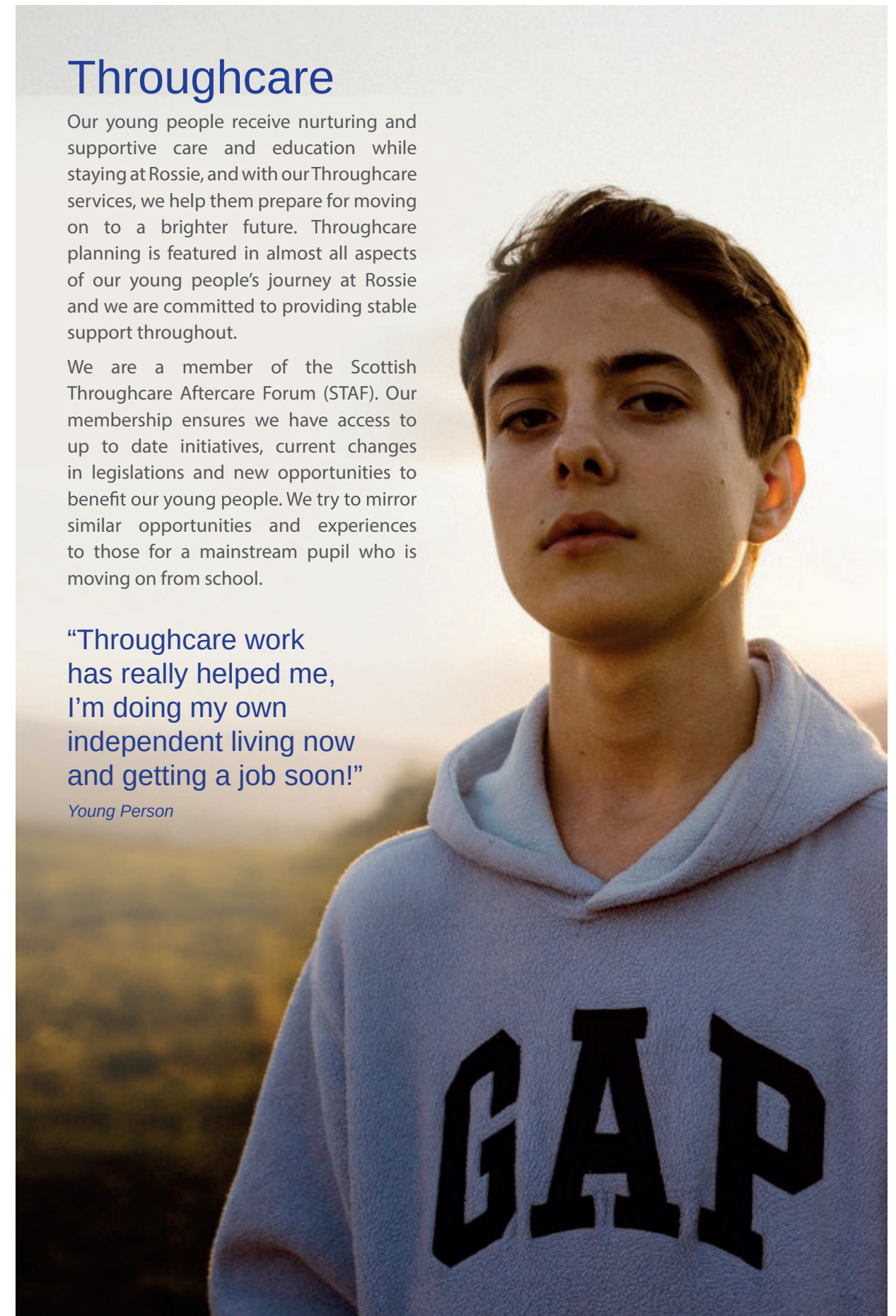
Throughcare

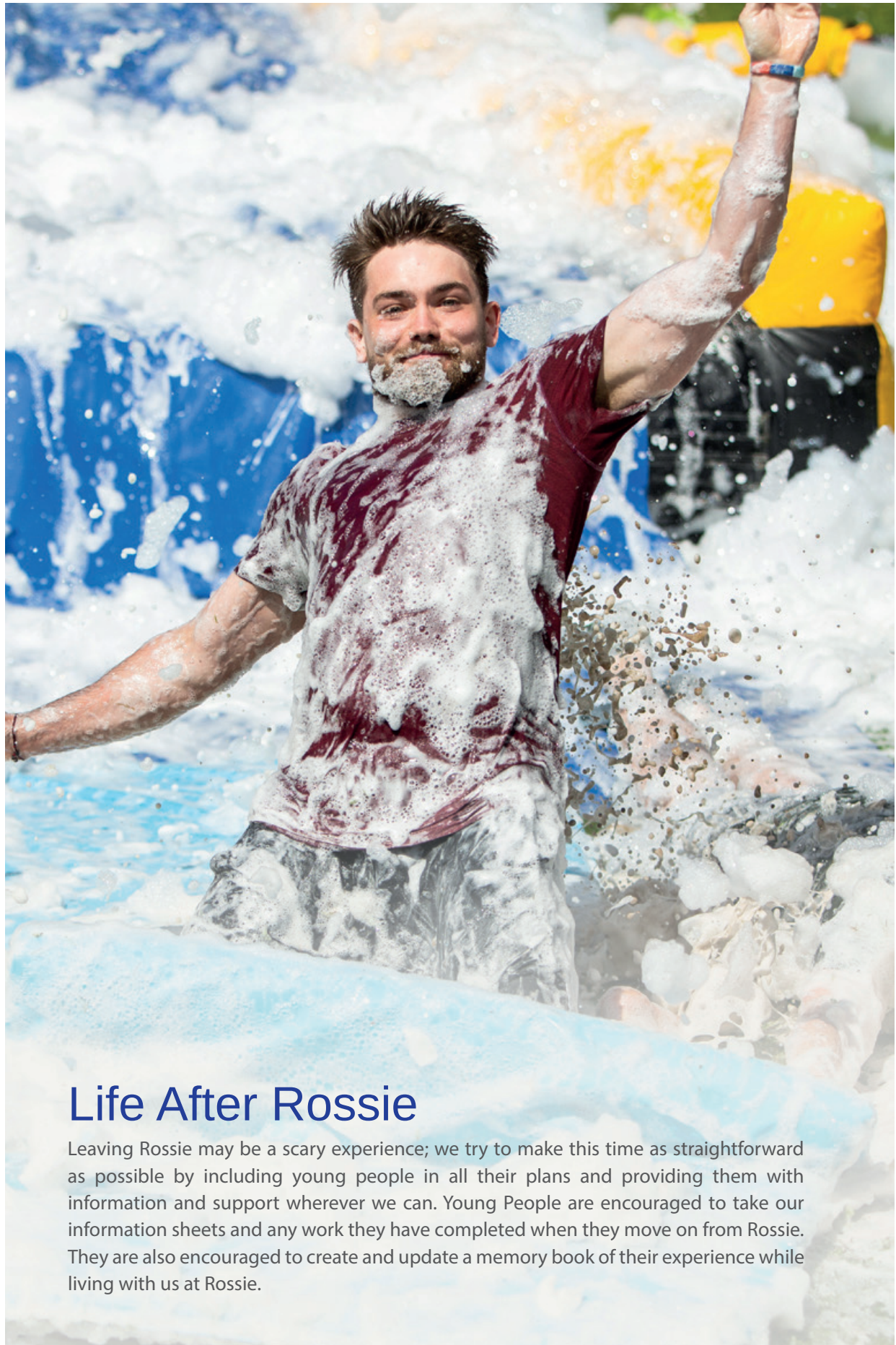
Our young people receive nurturing and supportive care and education while staying at Rossie, and with our Throughcare services, we help them prepare for moving on to a brighter future. Throughcare planning is featured in almost all aspects of our young people's journey at Rossie and we are committed to providing stable support throughout.

We are a member of the Scottish Throughcare Aftercare Forum (STAF). Our membership ensures we have access to up to date initiatives, current changes in legislations and new opportunities to benefit our young people. We try to mirror similar opportunities and experiences to those for a mainstream pupil who is moving on from school.

“Throughcare work has really helped me, I'm doing my own independent living now and getting a job soon!”

Young Person





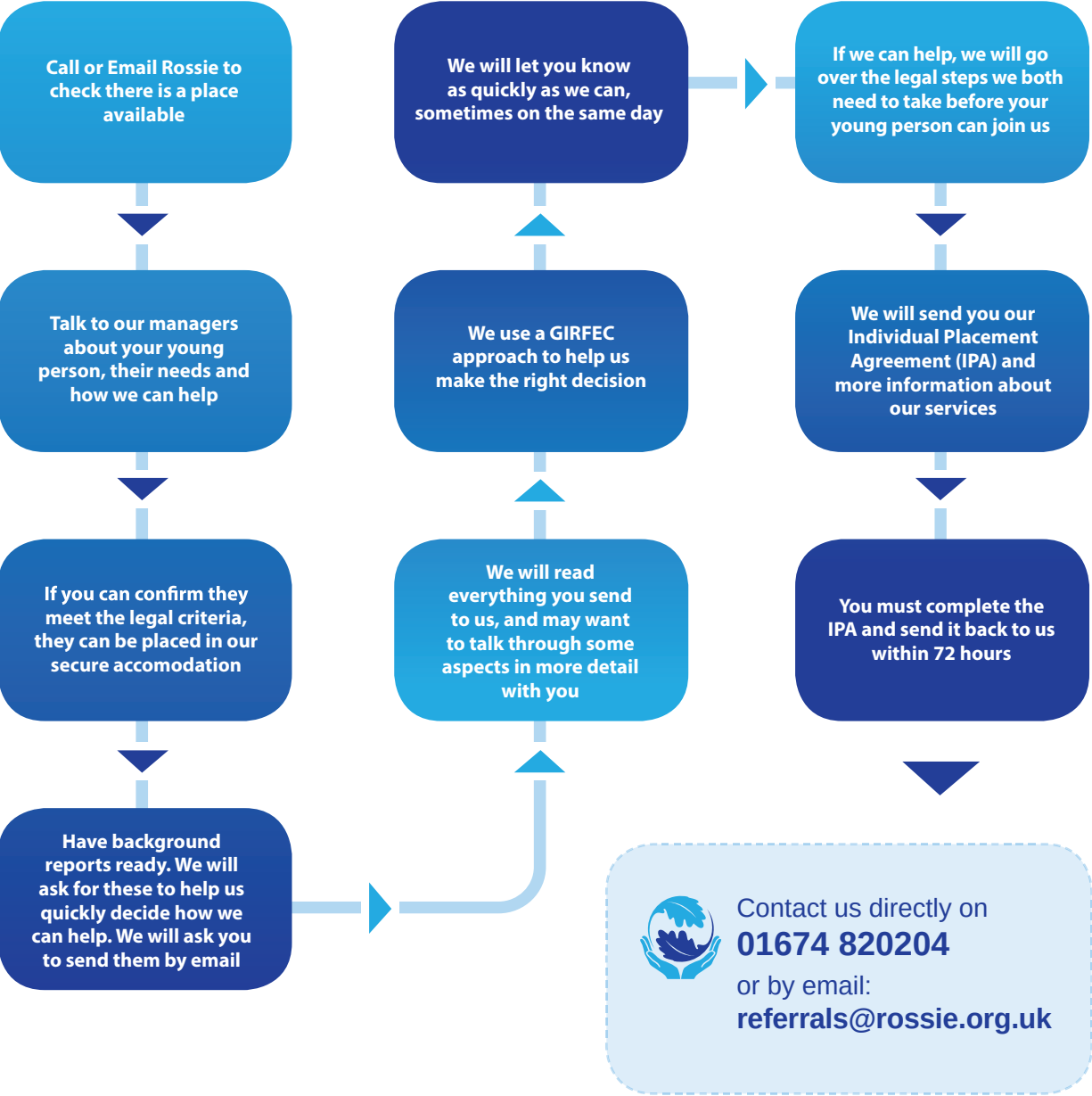
Life After Rossie

Leaving Rossie may be a scary experience; we try to make this time as straightforward as possible by including young people in all their plans and providing them with information and support wherever we can. Young People are encouraged to take our information sheets and any work they have completed when they move on from Rossie. They are also encouraged to create and update a memory book of their experience while living with us at Rossie.

Making A Referral

Our referrals process is as quick and straightforward as possible. Just a phone call, day or night, will put you in touch with our Duty Manager. See our Quick Guide on this page see the process.

We recognise that emergencies happen and we do our best to help in these situations. In the case of an emergency secure accommodation referral, we would require a letter, from the Chief Social Work Officer (or a delegate) for that young person, describing the reasons they meet secure criteria.





Rossie

Montrose | Angus | DD10 9TW
Tel: 01674 820204 | www.rossie.org.uk